



Since January 2020 Elsevier has created a COVID-19 resource centre with free information in English and Mandarin on the novel coronavirus COVID-19. The COVID-19 resource centre is hosted on Elsevier Connect, the company's public news and information website.

Elsevier hereby grants permission to make all its COVID-19-related research that is available on the COVID-19 resource centre - including this research content - immediately available in PubMed Central and other publicly funded repositories, such as the WHO COVID database with rights for unrestricted research re-use and analyses in any form or by any means with acknowledgement of the original source. These permissions are granted for free by Elsevier for as long as the COVID-19 resource centre remains active.



## IgA-Ab response to spike glycoprotein of SARS-CoV-2 in patients with COVID-19: A longitudinal study

Andrea Padoan<sup>a,b</sup>, Laura Sciacovelli<sup>b</sup>, Daniela Basso<sup>a,b</sup>, Davide Negrini<sup>a</sup>, Silvia Zuin<sup>a</sup>, Chiara Cosma<sup>b</sup>, Diego Faggian<sup>b</sup>, Paolo Matricardi<sup>c</sup>, Mario Plebani<sup>a,b,\*</sup>

<sup>a</sup> Department of Medicine-DIMED, University of Padova, Italy

<sup>b</sup> Department of Laboratory Medicine, University-Hospital of Padova, Italy

<sup>c</sup> Department of Pediatric Pulmonology, Immunology and Intensive Care Medicine, Charité Universitätsmedizin Berlin, Germany

### ABSTRACT

Validation studies of serological antibody tests must be properly designed for clinical, epidemiological and Public Health objectives such as confirmation of suspected COVID-19 cases, certification of seroconversion after infection, and epidemiological surveillance. We evaluated the kinetics of IgM, IgA and IgG SARS-CoV-2 antibodies in COVID-19 patients with confirmed (rRT-PCR) infection. We found that the IgA response appears and grows early, peaks at week 3, and it is stronger and more persistent than the IgM response. Further longitudinal investigations of virus-specific antibodies functions and of their protective efficacy over time are needed.

### 1. Introduction

Accurate diagnosis of COVID-19 is essential, not only to ensure appropriate patient care but also to facilitate identification of SARS-CoV-2 infected people, including asymptomatic carriers who need to be isolated to limit virus spread. Molecular testing to detect the SARS-CoV-2 RNA genome is widely employed to diagnose COVID-19 disease, asymptomatic infections and transmission chains [1]. However, there remains a great need for laboratory assays to measure antibody response and determine seroconversion. While such serological assays are not well suited to detect acute infections, they support a number of highly relevant applications. In fact, serological assays allows the study of immune response to SARS-CoV-2, and the identification of seroconversion; in addition, they may characterize COVID-19 course, and are essential for epidemiological studies and vaccine trials [2]. To provide “the right test at the right time” for the right target, the kinetics of the different antibody (Ab) isotypes production in COVID-19 patients must be thoroughly and preliminary investigated [3]. Aim of this paper is to describe the kinetics of SARS-CoV-2 IgA, and IgM in 19 COVID-19 patients using two different assays.

### 2. Methods

We used two different immunoassays to study the kinetics of SARS-CoV-2-specific antibodies (IgM, IgA, and IgG) for 6 weeks after the onset of symptoms (fever) in adult patients with confirmed (rRT-PCR) COVID-19. Tests were a chemiluminescent (CLIA) assay (MAGLUMI

2000 Plus), measuring SARS-CoV-2 specific IgM and IgG and an ELISA measuring specific IgG and IgA antibodies against SARS-CoV-2 (Euroimmun Medizinische Laboragnostika, Luebeck, Germany). Both assays have been performed according to the manufacturers' instructions, as previously reported [4,5]. The repeatability values (CV%) of CLIA assay for IgM are 3.06%, 1.84% and 4.05% at 0.61 kAU/L, 1.84 kAU/L and 4.39 kAU/L concentration levels, respectively; for IgG, CVs % are 5.69%, 3.86% and 3.18% at 0.48 kAU/L, 2.99 kAU/L and 10.59 kAU/L concentration levels, respectively. The SARS-CoV-2 IgM cut-off is 1.0 kAU/L, while for IgG the cut-off is 1.1 kAU/L [4]. The repeatability values (CV%) of ELISA for IgA range between 2.4% and 13.7% at a ratio of 1.03 and 0.20, respectively. For IgG, CVs % range between 3.9% and 16% at a ratio of 2.36 and 0.07, respectively. For both IgA and IgG the cut-off is  $\geq 1.1$ . The study was submitted to the Ethical Committee of the University-Hospital of Padova (protocol number 23307).

### 3. Results

The kinetics of IgA-Abs were longitudinally tested in 19 patients (15 males, mean age 65.4 years, SD 14.5, range 22–81 y; 4 females, mean age 63.7 years, SD 7.8, range 53–70 y) for an average follow-up time of 7.5 days (SD 4.9). IgM-Abs kinetics was tested in 51 patients (37 males, men age 69.1 years, SD 13.5, range 22–89 y; 14 females, men age 62.6 years, SD 11.0, range 41–82 y) for 4.6 days (SD 4.0) (Fig. 1). Average levels of IgM and IgA antibodies increased since 6–8 days from the onset of COVID-19. Compared to IgM-Ab, IgA-Ab showed

\* Corresponding author at: Department of Laboratory Medicine, University-Hospital of Padova, Via Giustiniani, 35128 Padova, Italy.

E-mail address: [mario.plebani@unipd.it](mailto:mario.plebani@unipd.it) (M. Plebani).

<https://doi.org/10.1016/j.cca.2020.04.026>

Received 23 April 2020; Received in revised form 24 April 2020; Accepted 24 April 2020

Available online 25 April 2020

0009-8981/ © 2020 Elsevier B.V. All rights reserved.

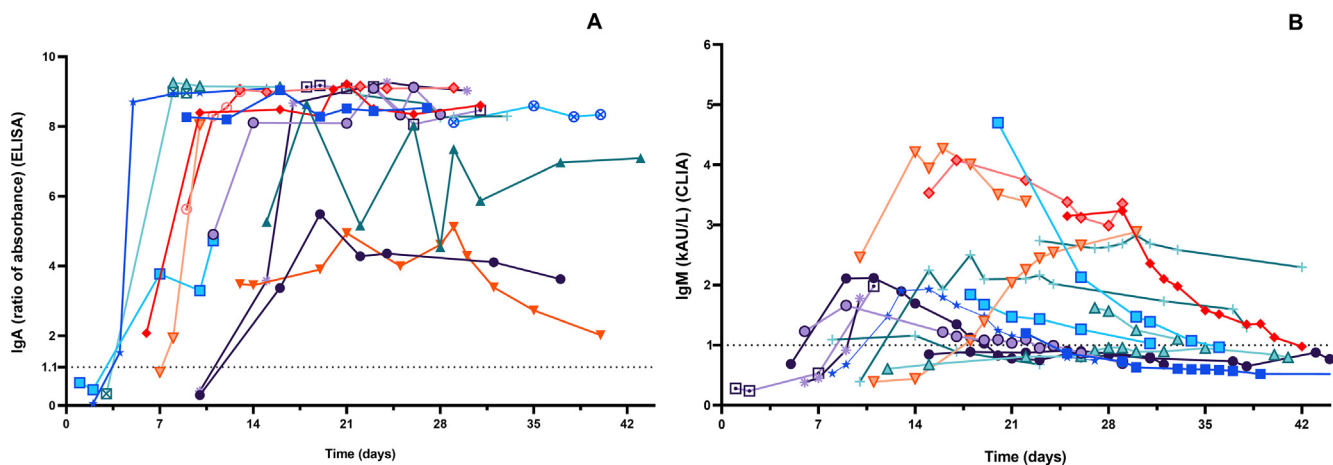
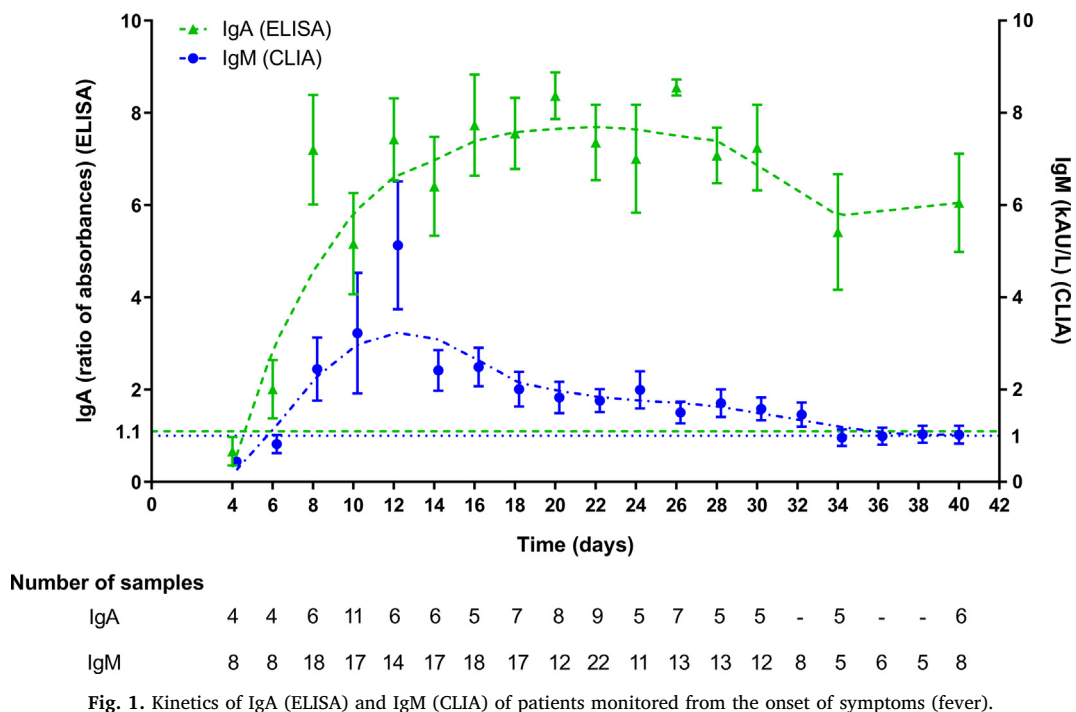


Fig. 2. Spaghetti plot of patients with more than 3 serial antibody determinations after the onset of symptoms (fever): A) IgA (n = 17 patients); B) IgM (n = 18 patients).

persistently higher levels for the whole observation period, with a peak level at 20–22 days. IgM-Ab levels peaked at 10–12 days and significantly declined after 18 days (Fig. 1). Fig. 2 shows the values of IgA-Ab and IgM-Ab in patients with more than 3 serial measurements (n = 18) that are heterogeneous in terms of onset and peak levels, but homogeneous for persistence. An IgA-Ab response to the S protein was detectable already in week 1 in 3/4 (75%) patients (Table 1). The values of IgG measured by the two assays was comparable and similar to the one already described with the same CLIA assay [4], being the clinical agreement 90.8% (number of patients = 84; Cohen’s K = 0.83; SE = 0.11) (Supplemental Fig. 1).

4. Discussion and conclusions

Detection of specific antibodies (IgM, IgA and IgG to SARS-CoV-2 spike protein) is useful to confirm SARS-CoV-2 infection in patients with PCR-positive COVID-19, essential in infected but asymptomatic subjects and in COVID-19 patients first examined many week after the disease onset or in those with a low viral load. These serological assays

are also essential to test the susceptibility or resistance to subsequent re-infection [6] and to perform epidemiological and surveillance studies. These tests are also being used to screen donor blood (convalescent plasma) to be transfused to patients with severe COVID-19 [7]. Timing at prescription is crucial for the interpretation of the test results and their rational and effective use for clinical decision. We have previously described the kinetics of IgM and IgG to SARS-CoV-2 using a chemiluminescent (CLIA) assay [4]. Here we show the peculiar characteristics of the kinetics of IgA antibodies in comparison to IgM, as well as their persistence over 38 days of follow-up from COVID-19 onset. The accuracy and reliability of serological methods is highly dependent from the choice of the targeted SARS-CoV-2 antigens and the assay format. The antigens used in the CLIA assay are the S-antigen and the N-protein, while the ELISA detects S1-specific IgA and IgG [3]. The differences observed between assays should be partially explained by differences in the targeted antigens. The spike (S) glycoprotein is densely glycosylated, with 66 N-linked glycosylation sites per trimer [8], a few of which only are the target of neutralizing antibodies [9]. Notwithstanding these fundamental differences, the IgG values measured

**Table 1**  
Descriptive statistics of IgA and IgM measurements, subdivided on the basis of each time point, up to 22–23 days (after the onset of fever).

Time from the onset of fever		IgA (ratio of absorbances)	IgM (kAU/L)
≤ 5 days	n	4	8
	Mean ± SD	0.67 ± 0.62	0.44 ± 0.15
	Median (IQR)	0.55 (0.25–1.01)	0.44(0.33–0.54)
	Min–Max	0.05–1.52	0.24–0.69
	n of Positive Tests (%)	1/4 (25.0%)	0/8 (0%)
6–7 days	n	4	8
	Mean ± SD	2.00 ± 1.27	0.82 ± 0.56
	Median (IQR)	1.64 (1.08–2.99)	0.55 (0.48–1.07)
	Min–Max	0.95–3.77	0.38–2.01
	n of Positive Tests (%)	3/4 (75.0%)	2/8 (25.0%)
8–9 days	n	6	18
	Mean ± SD	7.20 ± 2.91	2.45 ± 2.90
	Median (IQR)	8.6 (5.63–9.21)	1.02 (0.68–2.11)
	Min–Max	1.93–9.25	0.38–8.57
	n of Positive Tests (%)	6/6 (100%)	9/18 (50%)
10–11 days	n	11	17
	Mean ± SD	5.17 ± 3.64	3.22 ± 5.40
	Median (IQR)	4.90 (0.41–8.39)	1.09 (0.7–2.12)
	Min–Max	0.29–9.15	0.39–18.04
	n of Positive Tests (%)	8/11 (72.73%)	9/17 (52.9%)
12–13 days	n	6	14
	Mean ± SD	7.42 ± 2.18	5.13 ± 5.18
	Median (IQR)	8.37 (6.29–9.00)	2.81 (1.48–9.21)
	Min–Max	3.48–9.06	0.44–16.03
	n of Positive Tests (%)	6/6 (100.0%)	11/14 (78.6%)
14–15 days	n	6	17
	Mean ± SD	6.41 ± 2.63	2.41 ± 1.82
	Median (IQR)	6.68 (3.58–8.98)	1.93 (1.04–3.53)
	Min–Max	3.45–9.083	0.44–7.40
	n of Positive Tests (%)	6/6 (100.0%)	13/17 (76.5%)
16–17 days	n	5	18
	Mean ± SD	7.74 ± 2.46	2.50 ± 1.78
	Median (IQR)	8.67 (8.48–9.04)	1.86 (1.22–3.34)
	Min–Max	3.37–9.13	0.75–7.69
	n of Positive Tests (%)	5/5 (100%)	16/18 (88.9%)
18–19 days	n	7	17
	Mean ± SD	7.56 ± 2.04	2.01 ± 1.56
	Median (IQR)	8.29 (5.49–9.13)	1.49 (1.12–2.09)
	Min–Max	3.90–9.18	0.89–7.33
	n of Positive Tests (%)	7/7 (100%)	16/17 (94.1%)
20–21 days	n	8	12
	Mean ± SD	8.38 ± 1.44	1.83 ± 1.18
	Median (IQR)	9.03 (8.30–9.09)	1.36 (1.06–2.12)
	Min–Max	4.94–9.22	0.78–4.70
	n of Positive Tests (%)	8/8 (100%)	10/12 (83.3%)
22–23 days	n	10	22
	Mean ± SD	7.36 ± 2.60	1.76 ± 1.16
	Median (IQR)	8.70 (5.16–9.09)	1.32 (0.92–2.26)
	Min–Max	1.95–9.15	0.38–5.07
	n of Positive Tests (%)	10/10 (100%)	15/22 (68.2%)

n = number of samples obtained within the specified time period.

with the two assays are comparable (Supplemental Figure). We

acknowledge that we did not investigate any children and immunocompromised subjects, but only severely sick and adult patients; moreover, the follow-up period was not extended enough to properly test the antibody persistence over time. Nonetheless, given that the levels of spike-binding antibodies targeting S1 is highly correlated to those of neutralizing antibodies (NABs), our results may be useful to design both, passive antibody therapy and vaccine development [10]. However, further longitudinal investigations of virus-specific antibodies functions and of their protective efficacy over time are needed.

## Acknowledgement

We acknowledge the support of Euroimmun Medizinische Laboragnostika, Luebeck, Germany for kindly supplying the reagents without any influence in study design and data analysis.

## Appendix A. Supplementary data

Supplementary data to this article can be found online at <https://doi.org/10.1016/j.cca.2020.04.026>.

## References

- [1] K. Mizumoto, K. Kagaya, A. Zarebski, G. Chowell, Estimating the asymptomatic proportion of coronavirus disease 2019 (COVID-19) cases on board the Diamond Princess cruise ship, Yokohama, Japan, 2020, *Euro Surveill.* 25 (10) (2020), <https://doi.org/10.2807/1560-7917>.
- [2] T.F. Amana, T.H.O. Nguyen, V. Chromikova, S. Strohmeier, D. Stadblauer, Javier A et al. A serological assay to detect SARS-CoV-2 seroconversion in humans. *medRxiv* <http://doi.org/10.1101/2020.03.17.20037713>.
- [3] Nisreen M.A. Okba, Marcel A. Müller, Wentao Li, Chunyan Wang, Corine H. GeurtsvanKessel, Victor M. Corman, Mart M. Lamers, Reina S. Sikkema, Erwin de Bruin, Felicity D. Chandler, Yazdan Yazdanpanah, Quentin Le Hingrat, Diane Descamps, Nadhira Houhou-Fidouh, Chantal B.E.M. Reusken, Berend-Jan Bosch, Christian Drosten, Marion P.G. Koopmans, Bart L. Haagmans, Severe Acute Respiratory Syndrome Coronavirus 2 – Specific Antibody Responses in Coronavirus Disease 2019 Patients, *Emerg. Infect. Dis.* 26 (7) (2020), <https://doi.org/10.3201/eid2607.200841>.
- [4] A. Padoan, C. Cosma, L. Sciacovelli, D. Faggiani, M. Plebani, Analytical performances of a chemiluminescence immunoassay for SARS-CoV-2 IgM/IgG and antibody kinetics. *Clin. Chem. Lab. Med.* 2020 Apr 16. pii://j.cclm.ahead-of-print/cclm-2020-0443/cclm-2020-0443.xml. <http://doi.org/10.1515/cclm-2020-0443>. [Epub ahead of print].
- [5] R. Lassauniere, A. Frische, Z.B. Harboe, A.C.Y. Nielsen, A. Fomsgaard, K.A. Krogfelt et al. Evaluation of nine commercial SARS-CoV-2 immunoassays, *medrxiv* <http://doi.org/10.1101/2020.04.09.20056325>.
- [6] L. Bao, W. Deng, H. Gao, C. Xiao, J. Liu, J. Xue et al. Reinfection could not occur in SARS-CoV-2 rhesus macaques. *bioRxiv* 2020:2020.03.13.990226. <http://doi.org/10.1101/2020.03.13990226>.
- [7] C. Shen, Z. Wang, F. Zhao, et al. Treatment of 5 Critically Ill Patients With COVID-19 With Convalescent Plasma, *JAMA*, Published online March 27, 2020. <http://doi.org/10.1001/jama.2020.4783>.
- [8] D. Wrapp, N. Wang, K.S. Corbett, J.A. Goldsmith, C.L. Hsieh, O. Abiona, Jet, et al., Cryo-EM structure of the 2019-nCoV spike in the prefusion conformation, *Science* 367 (2020) 1260–1263.
- [9] A.C. Walls, Y.J. Park, M.A. Tortorici, A. Wall, A.T. McGuire, D. Veasley, Structure, Function, and Antigenicity of the SARS-CoV-2 Spike Glycoprotein, *Cell* S0092–8674 (2020) 30262–30272.
- [10] F. Wu, A. Wang, M. Liu, Q. Wang, J. Chen, S. Xia et al., Neutralising antibody responses to SARS-CoV-2 in a COVID-19 recovered patient cohort and they implications. *medRxiv* <http://doi.org/10.1101/2020.03.30.20047365>.